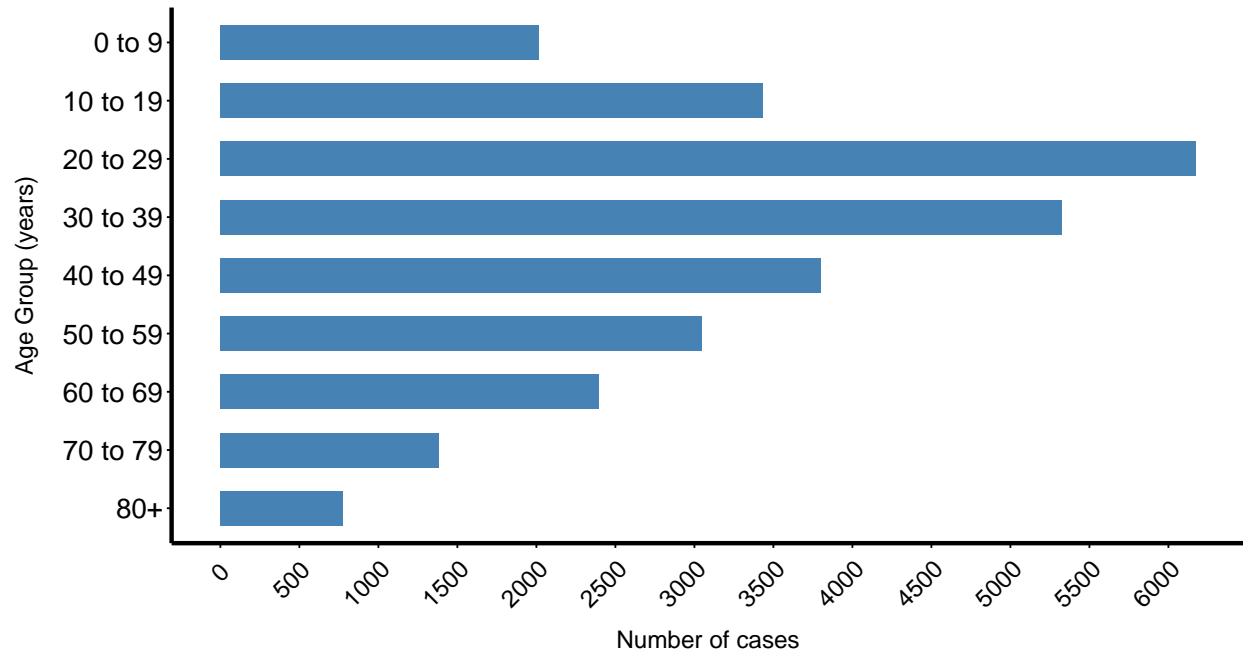


Missoula County COVID-19 Cases

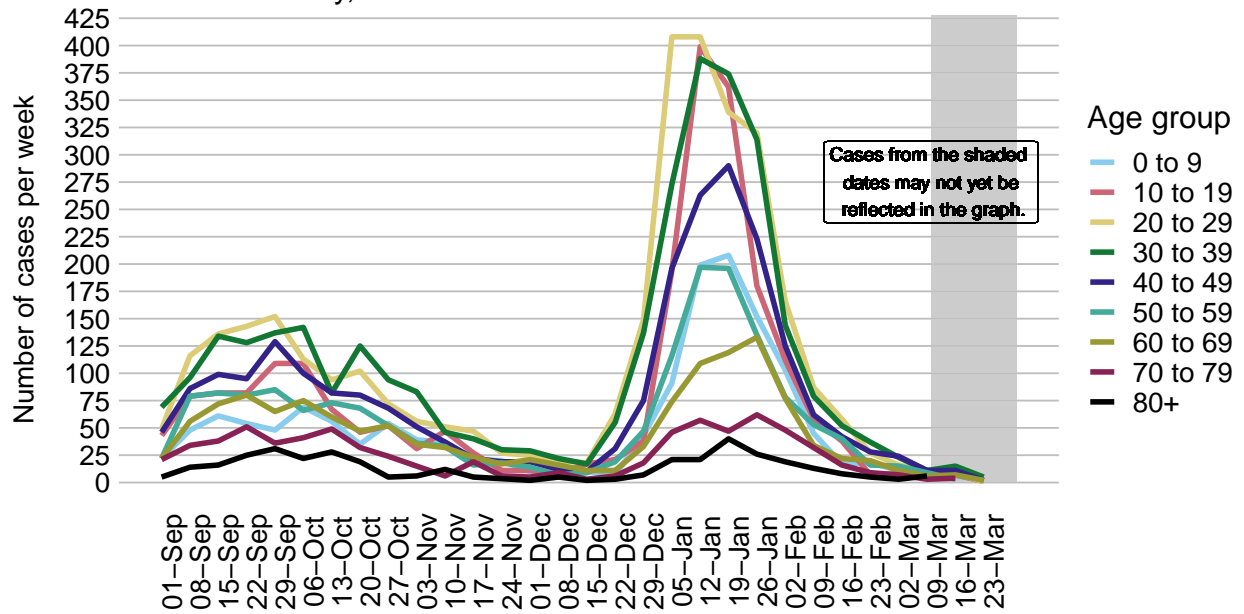
Data as of March 28, 2022

COVID-19 Cases by age group

Missoula County, since March 2020. N = 28360 cases.

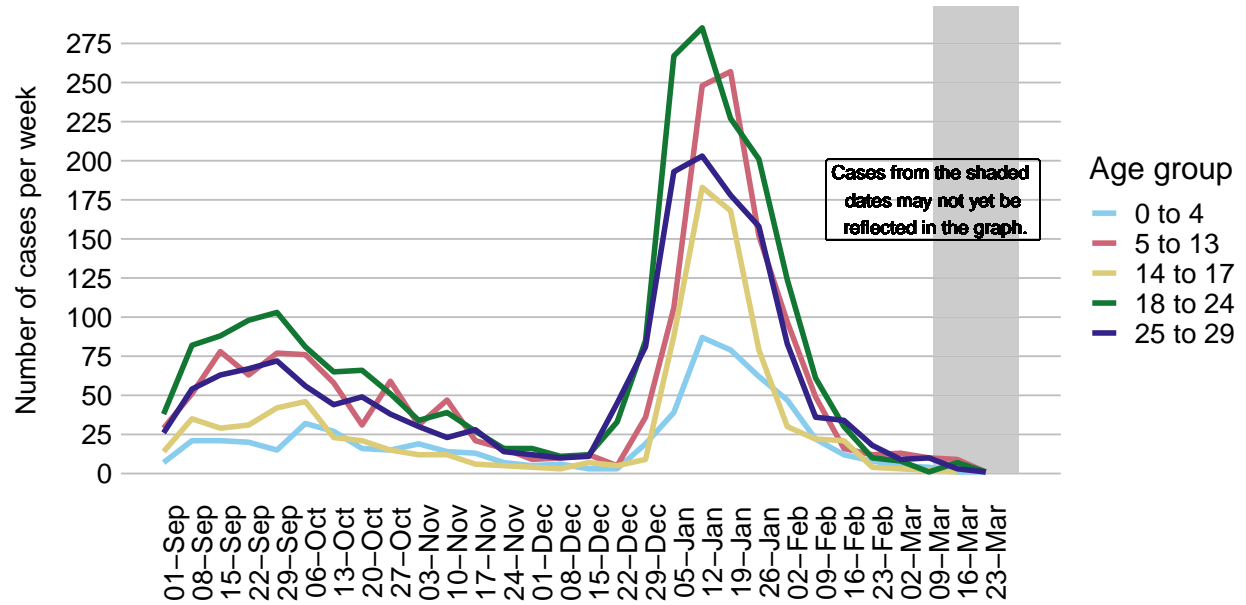


Weekly COVID-19 cases by age group
Missoula County, 2021. N = 16680 cases.

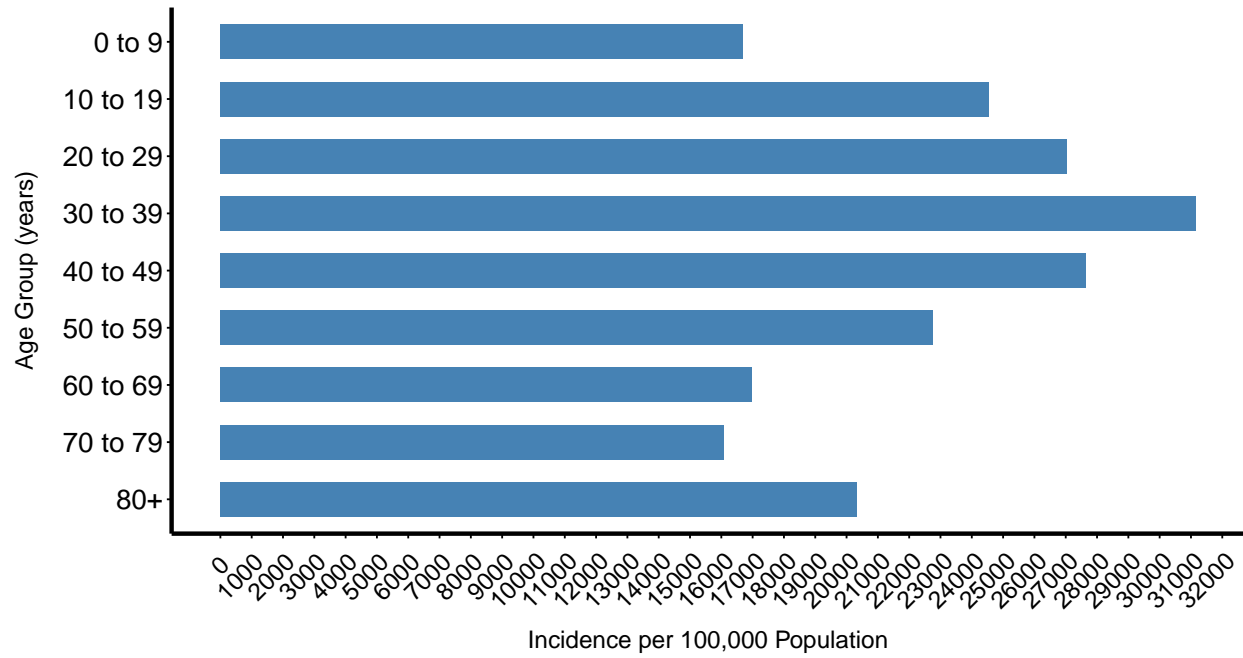


Weekly COVID-19 cases by age group

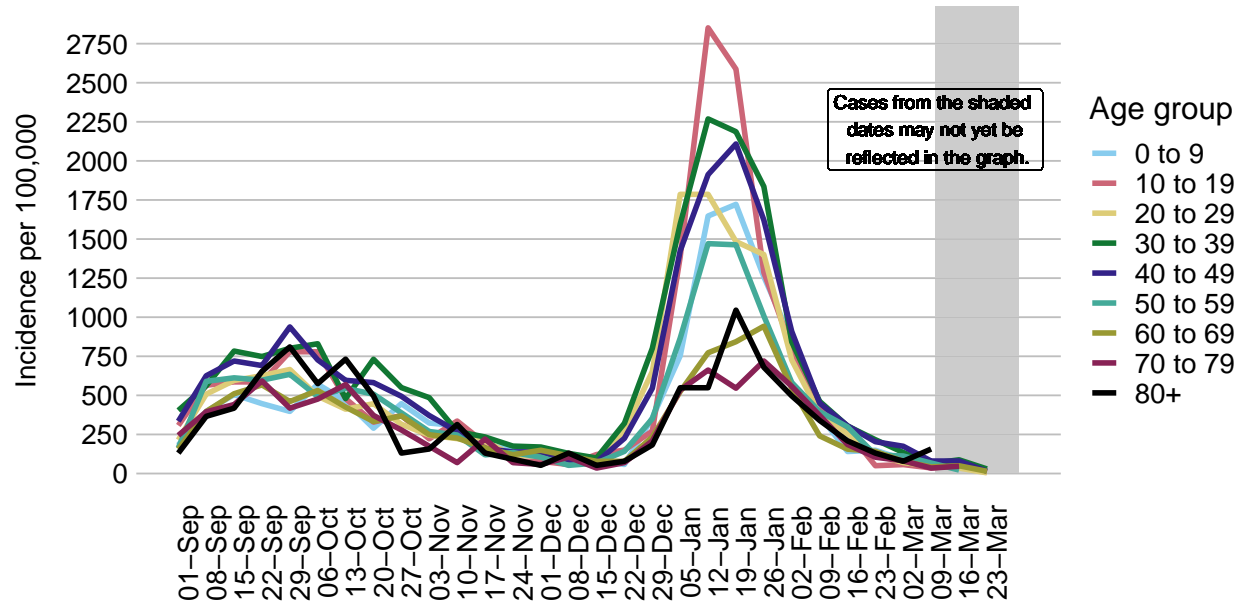
Missoula County, 2021. N = 7041 cases.



COVID-19 incidence by age group
Missoula County, since March 2020. N = 28360 cases.

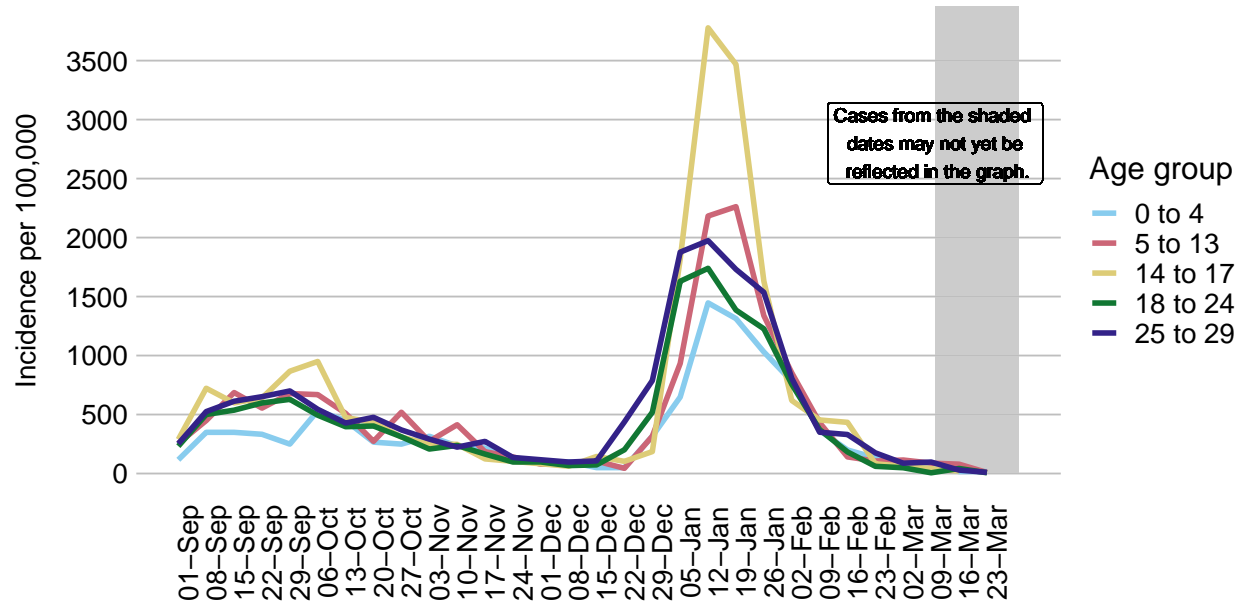


COVID-19 incidence per week by age group Missoula County, 2021. N = 16680 cases.



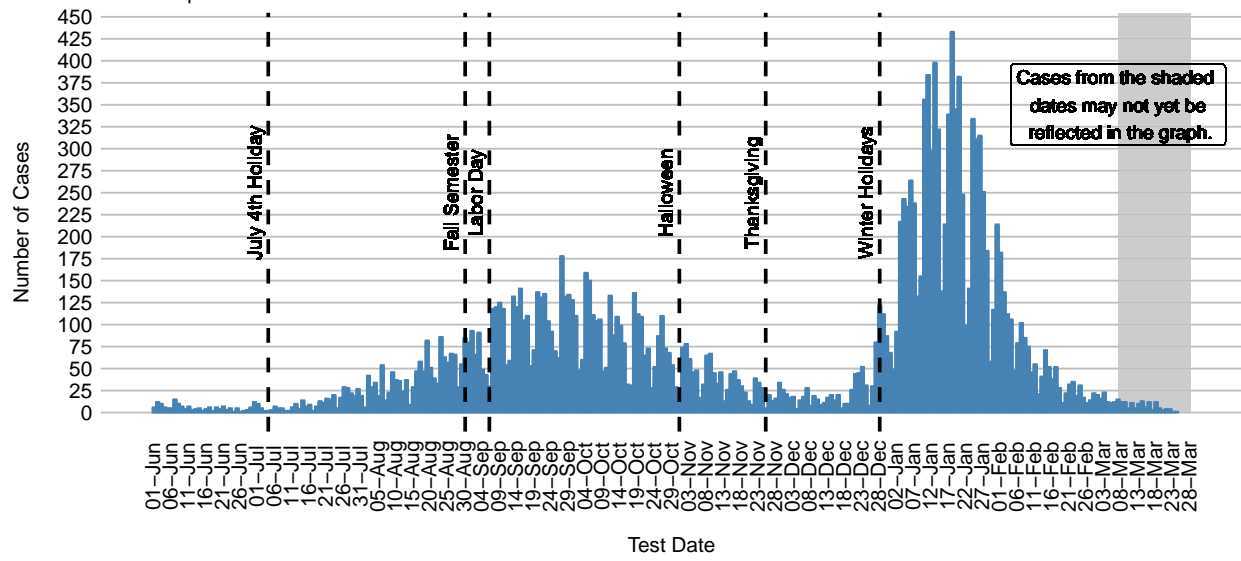
COVID-19 incidence per week by age group

Missoula County, 2021. N = 7041 cases.

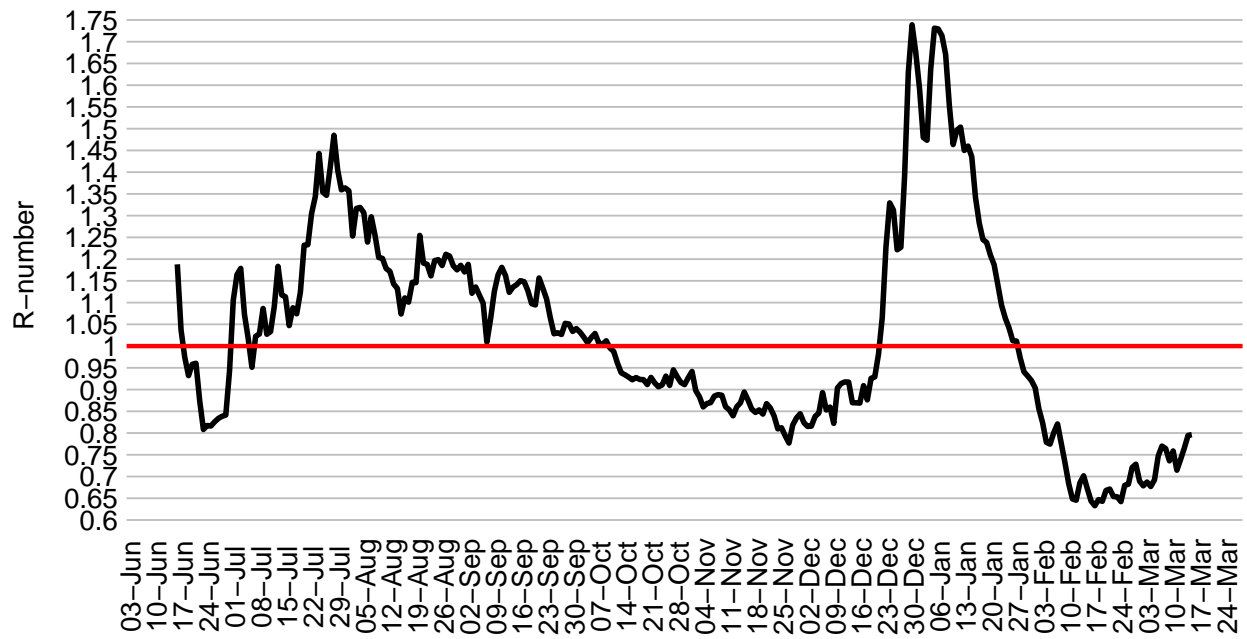


COVID-19 Cases in Missoula County Since June 1, 2021

Cases in plot = 18766



COVID-19 Rolling 14-day R-number, Missoula County



COVID-19 Cases in Missoula County by Date

Total cases = 28564

