

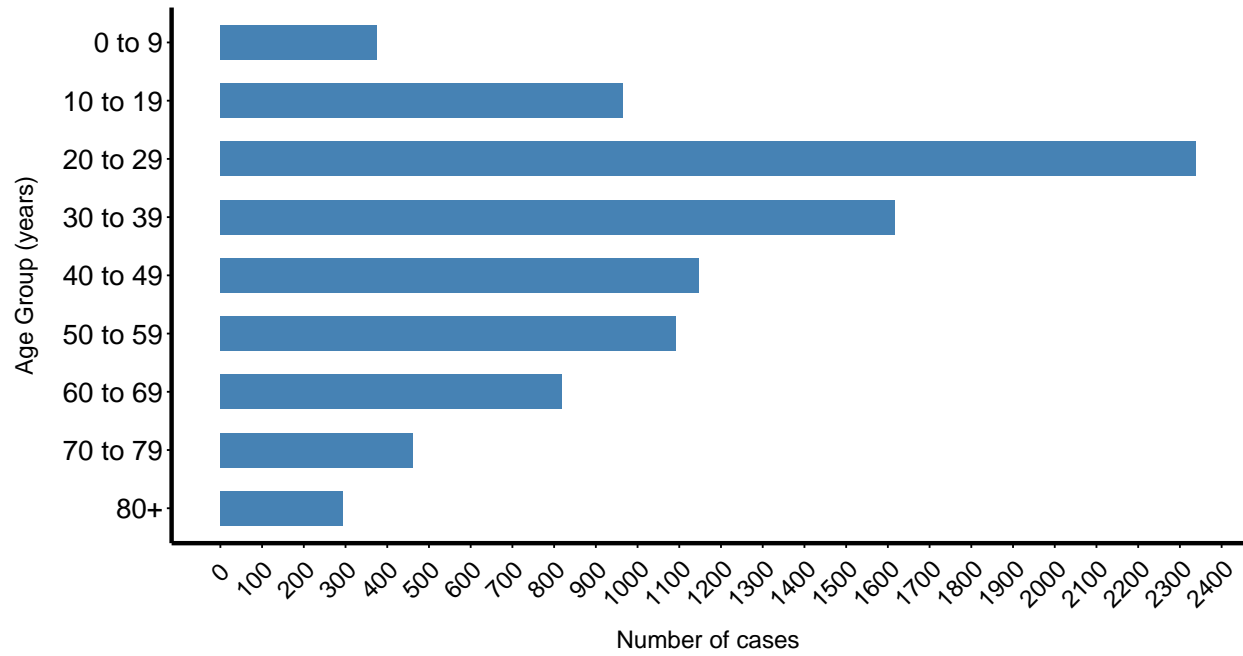
# Missoula County COVID-19 Cases

Ethan Walker, University of Montana

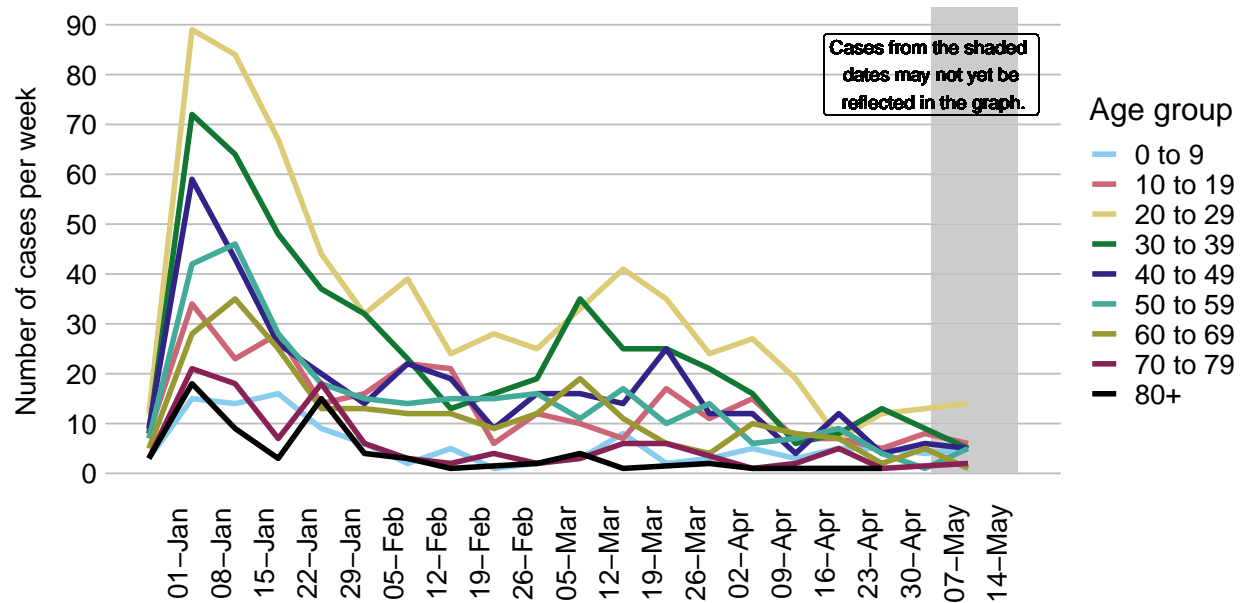
Data as of May 17, 2021

## COVID-19 Cases by age group

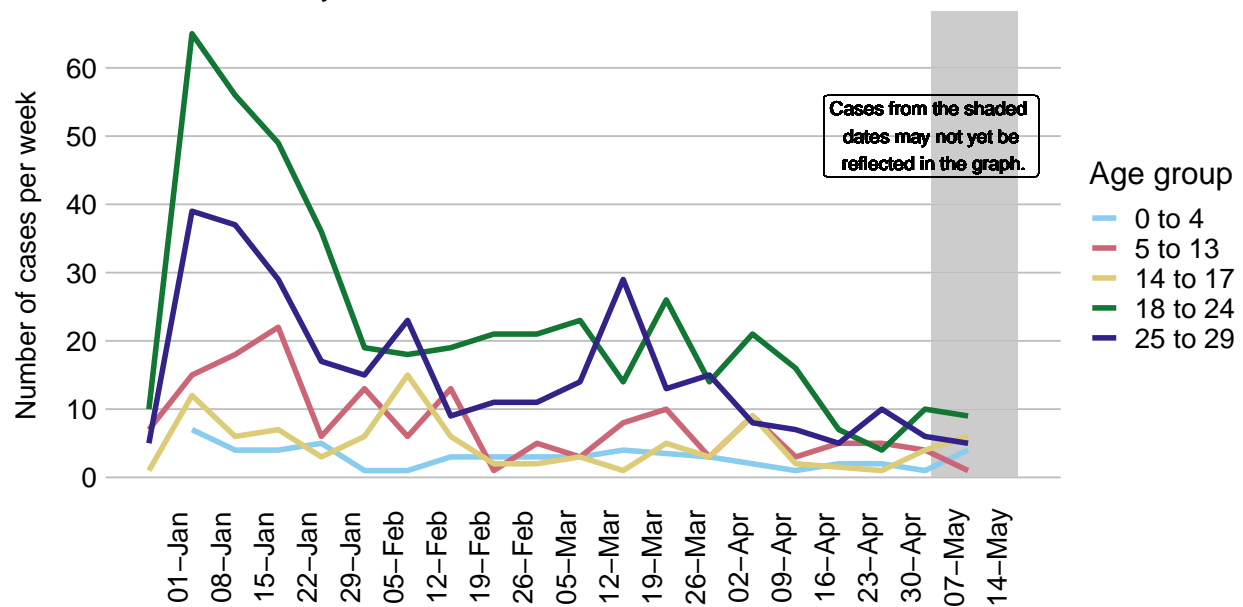
Missoula County, since March 2020. N = 9107 cases.



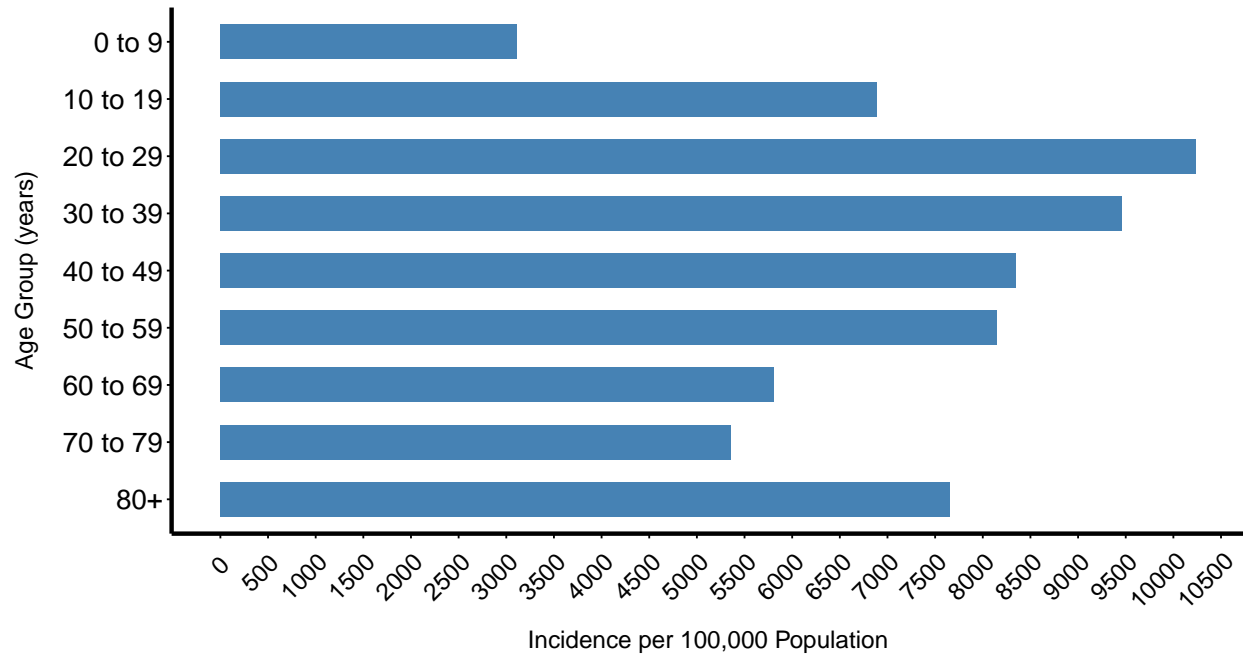
Weekly COVID-19 cases by age group  
Missoula County, 2021. N = 2630 cases.



Weekly COVID-19 cases by age group  
Missoula County, 2021. N = 1066 cases.

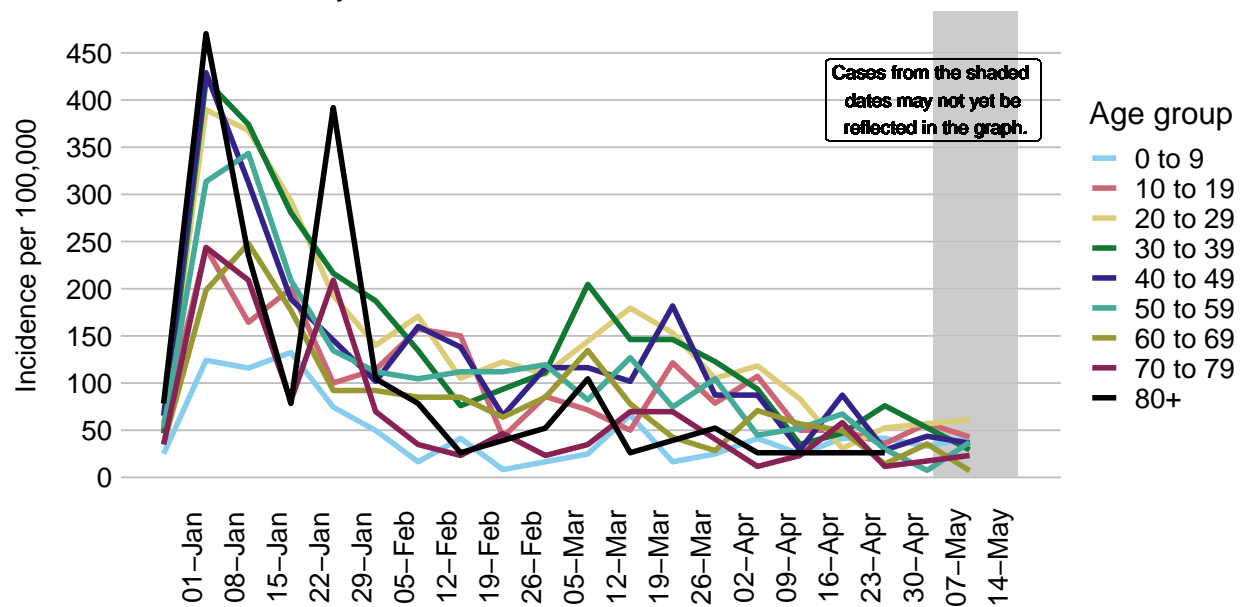


COVID–19 incidence by age group  
Missoula County, since March 2020. N = 9107 cases.



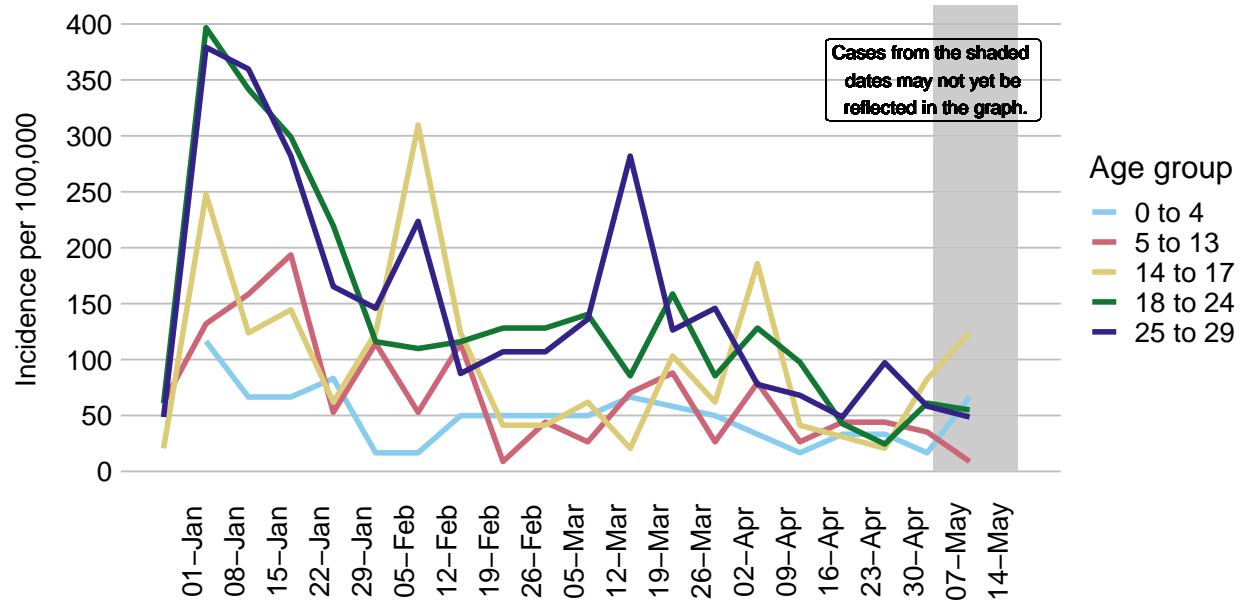
# COVID-19 incidence per week by age group

Missoula County, 2021. N = 2630 cases.



# COVID-19 incidence per week by age group

Missoula County, 2021. N = 1066 cases.



COVID-19 Cases in Missoula County Since January 1, 2021  
 Cases in plot = 2624

