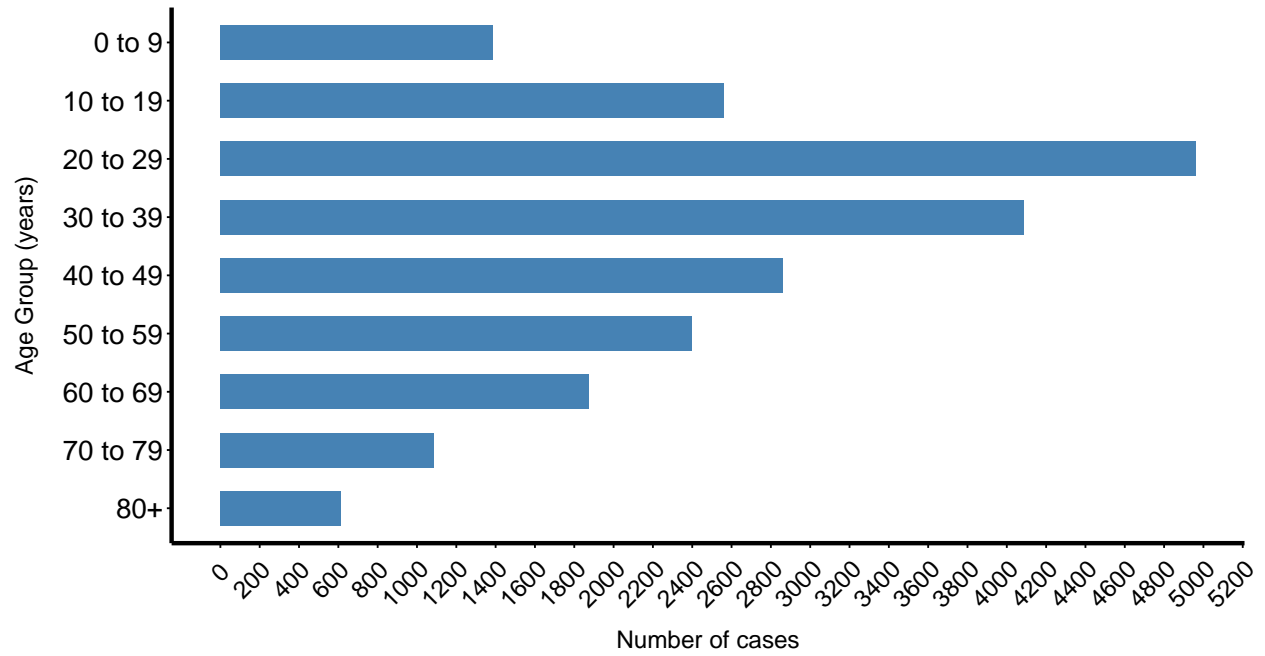


Missoula County COVID-19 Cases

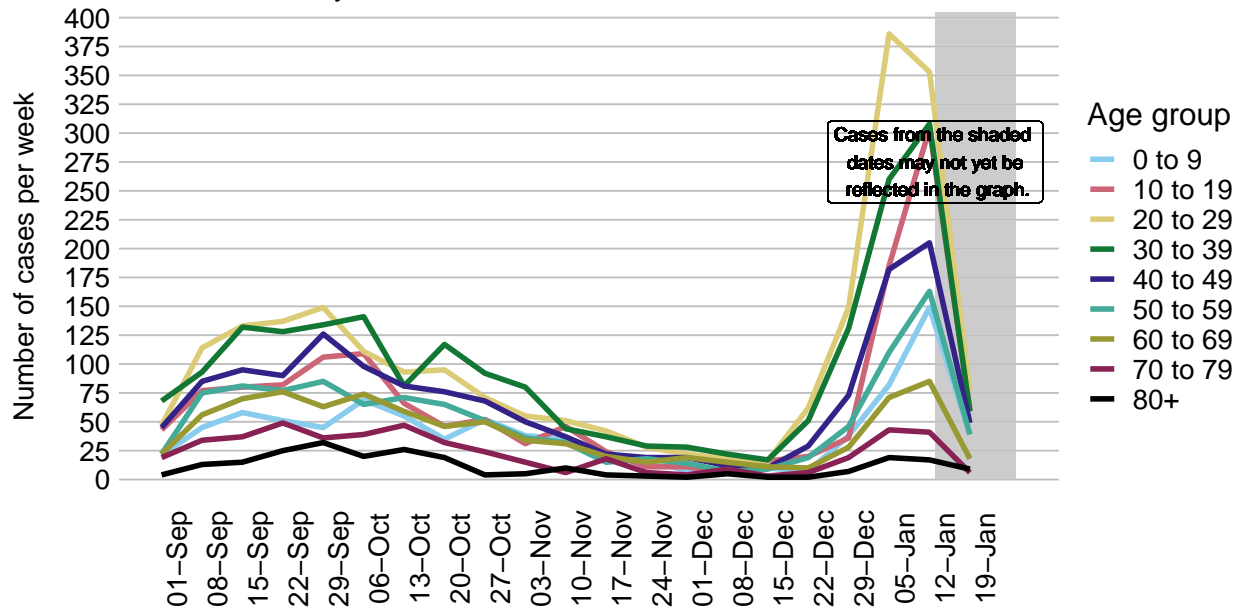
Data as of January 24, 2022

COVID-19 Cases by age group

Missoula County, since March 2020. N = 21827 cases.

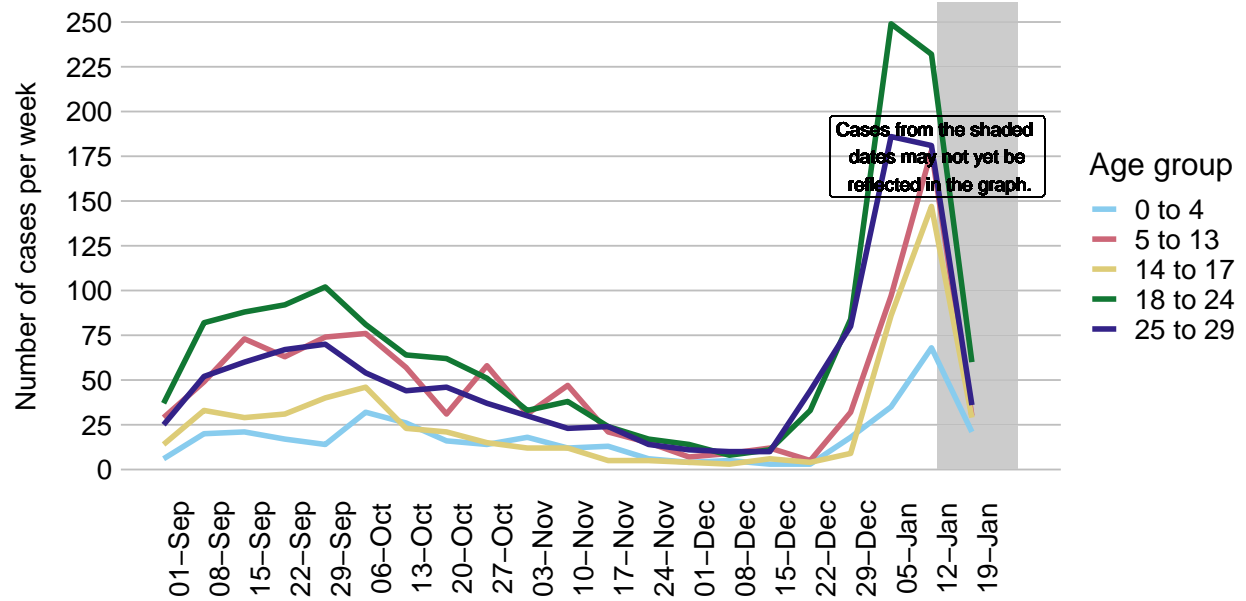


Weekly COVID-19 cases by age group
Missoula County, 2021. N = 10739 cases.

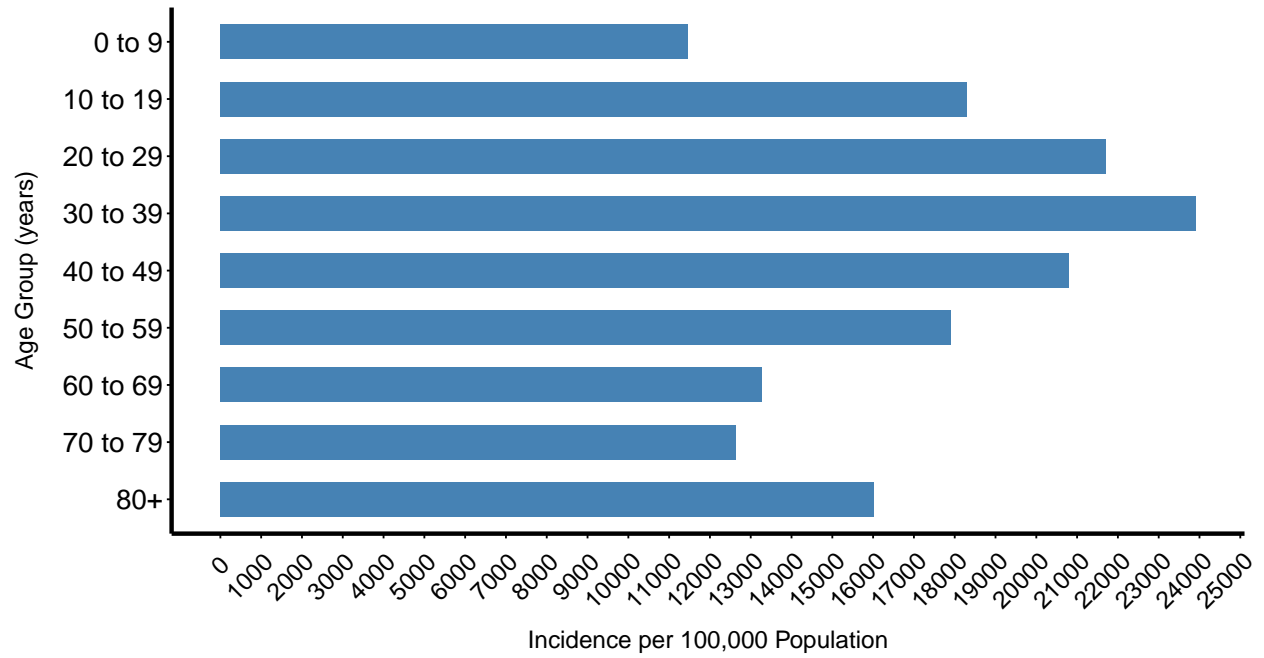


Weekly COVID-19 cases by age group

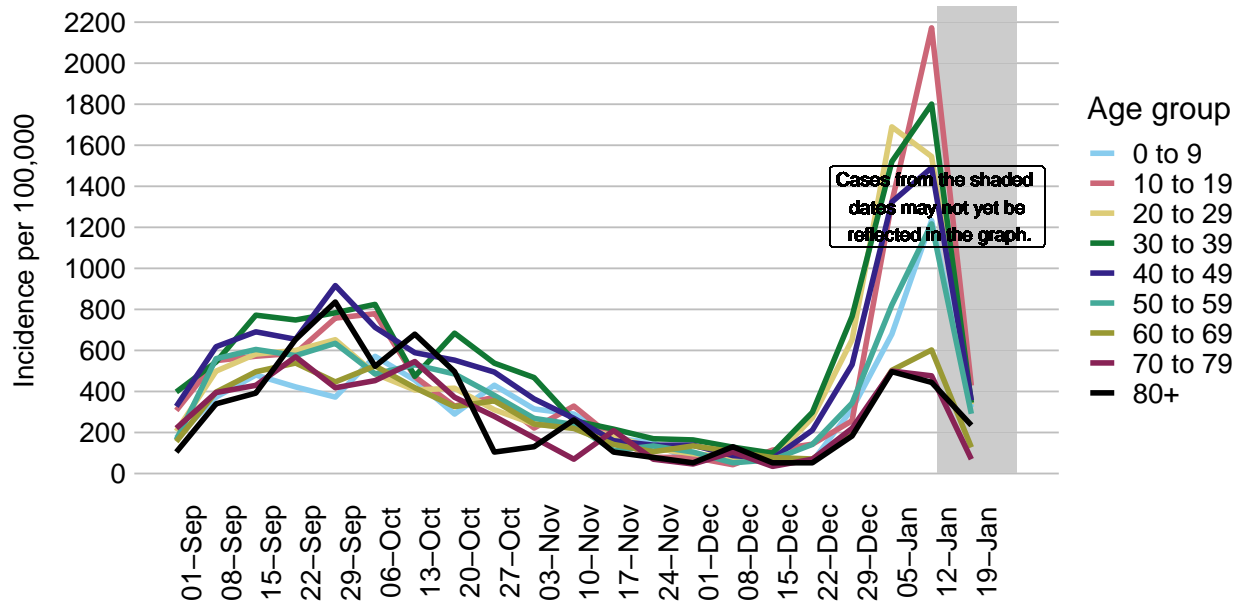
Missoula County, 2021. N = 4507 cases.



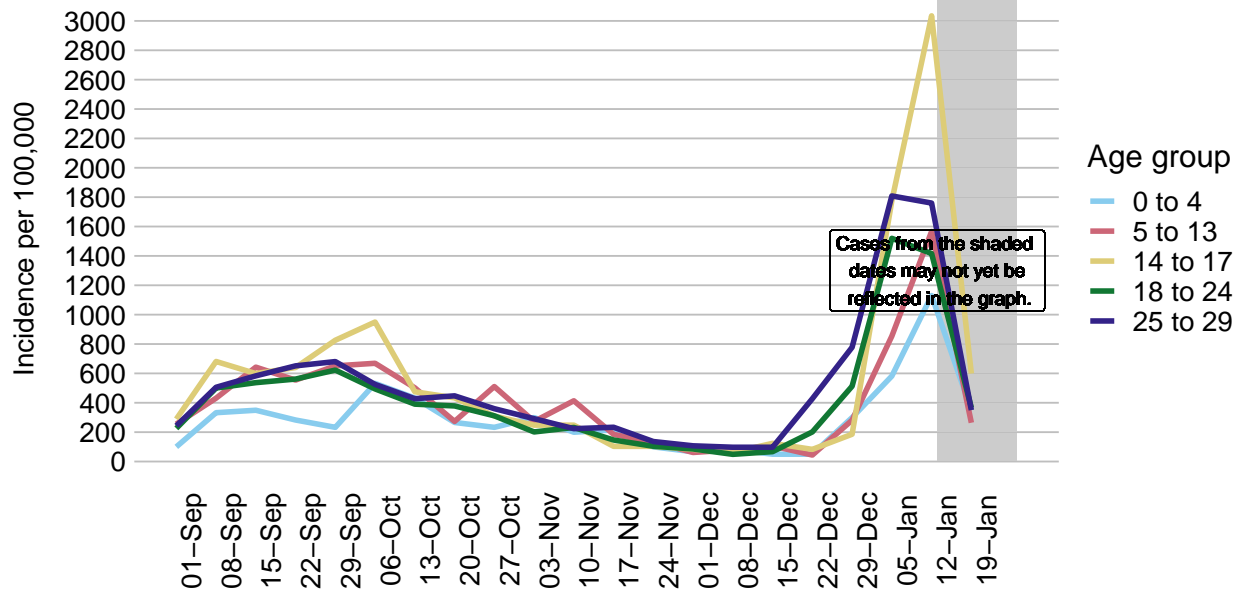
COVID–19 incidence by age group
Missoula County, since March 2020. N = 21827 cases.



COVID-19 incidence per week by age group
Missoula County, 2021. N = 10739 cases.

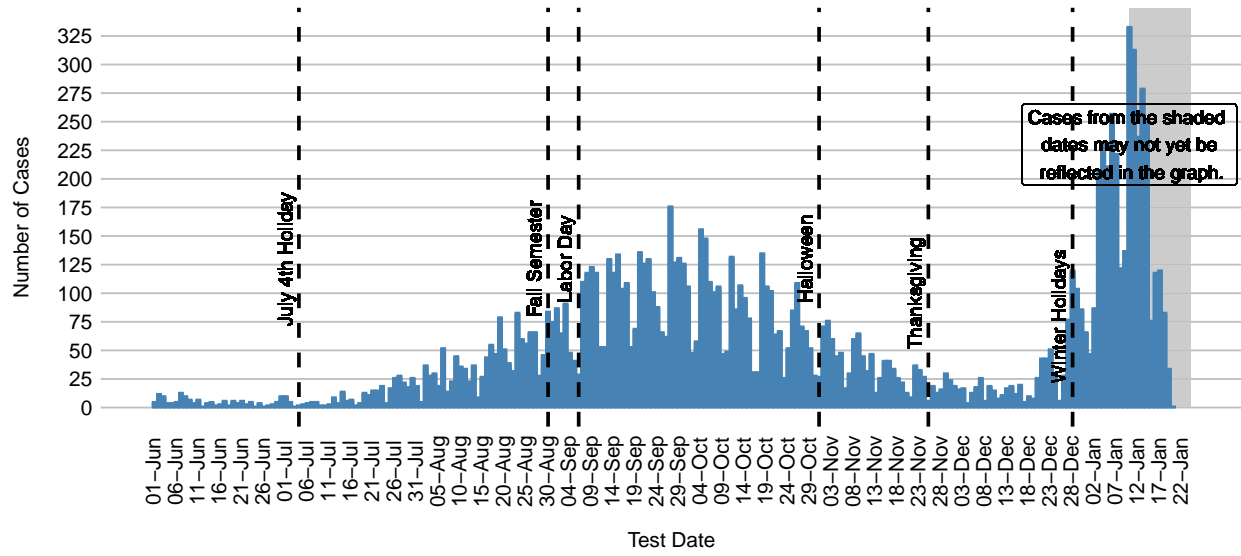


COVID-19 incidence per week by age group Missoula County, 2021. N = 4507 cases.

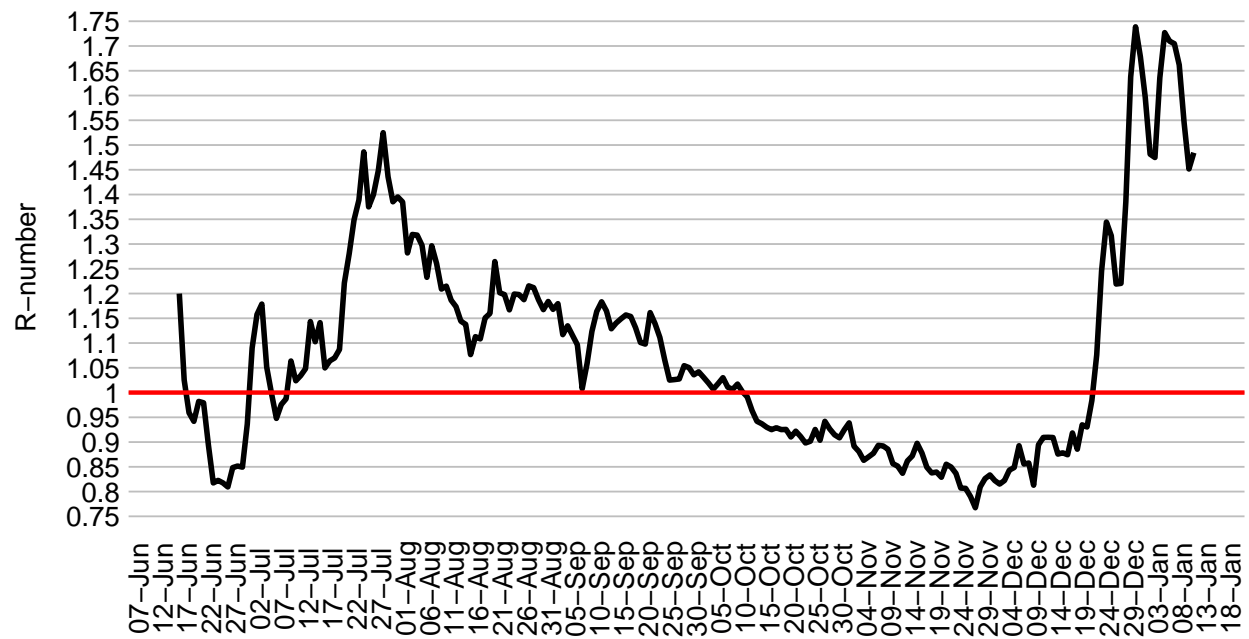


COVID-19 Cases in Missoula County Since June 1, 2021

Cases in plot = 12544

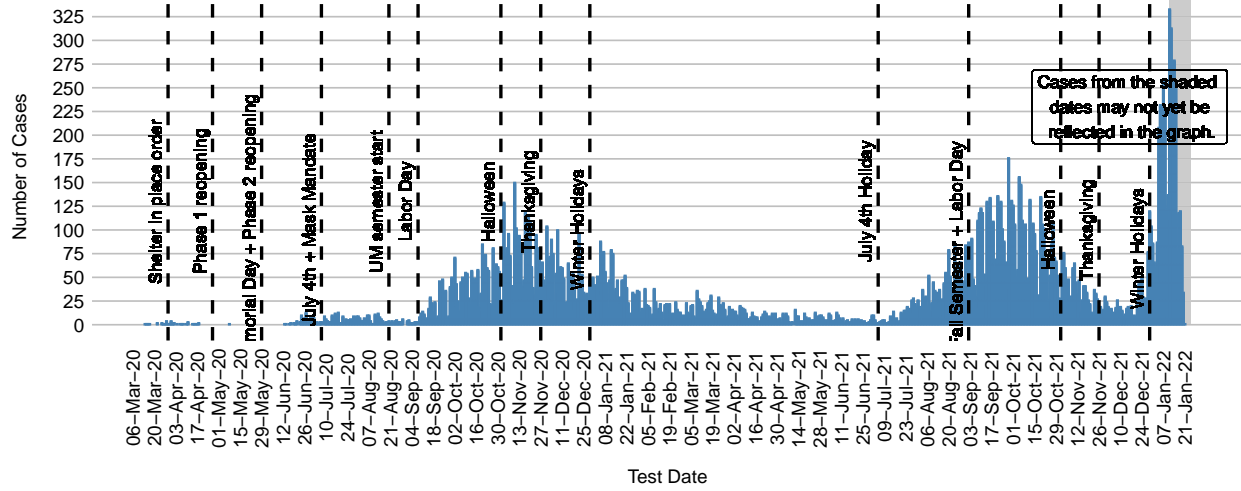


COVID-19 Rolling 14-day R-number, Missoula County

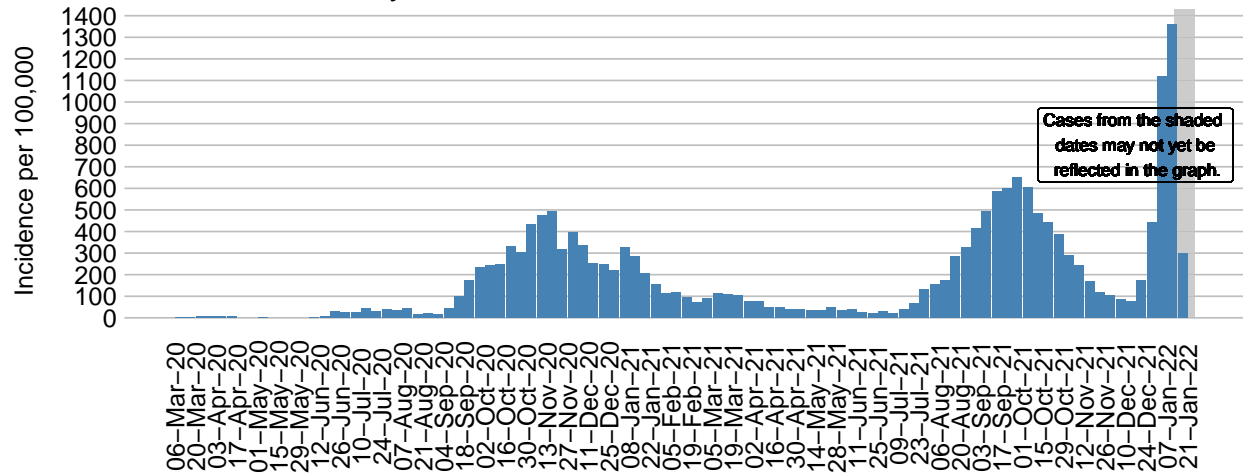


COVID-19 Cases in Missoula County by Date

Total cases = 21831



COVID-19 weekly incidence of cases



COVID-19 weekly incidence of hospitalization

