

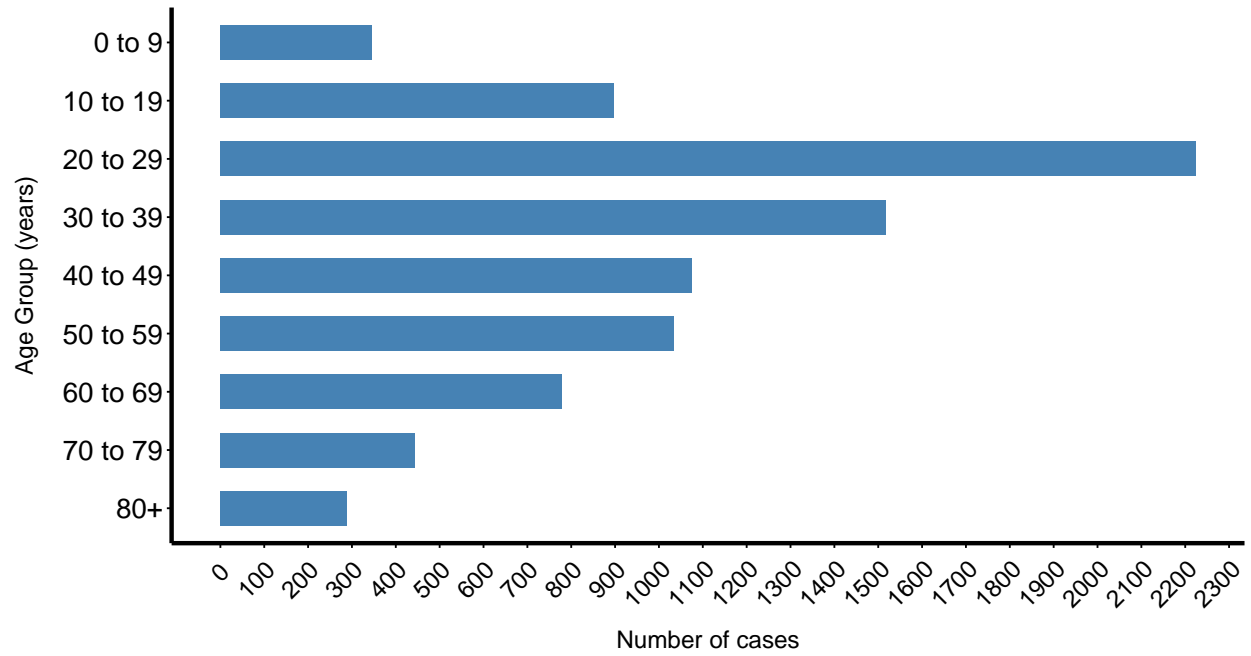
Missoula County COVID-19 Cases

Ethan Walker, University of Montana

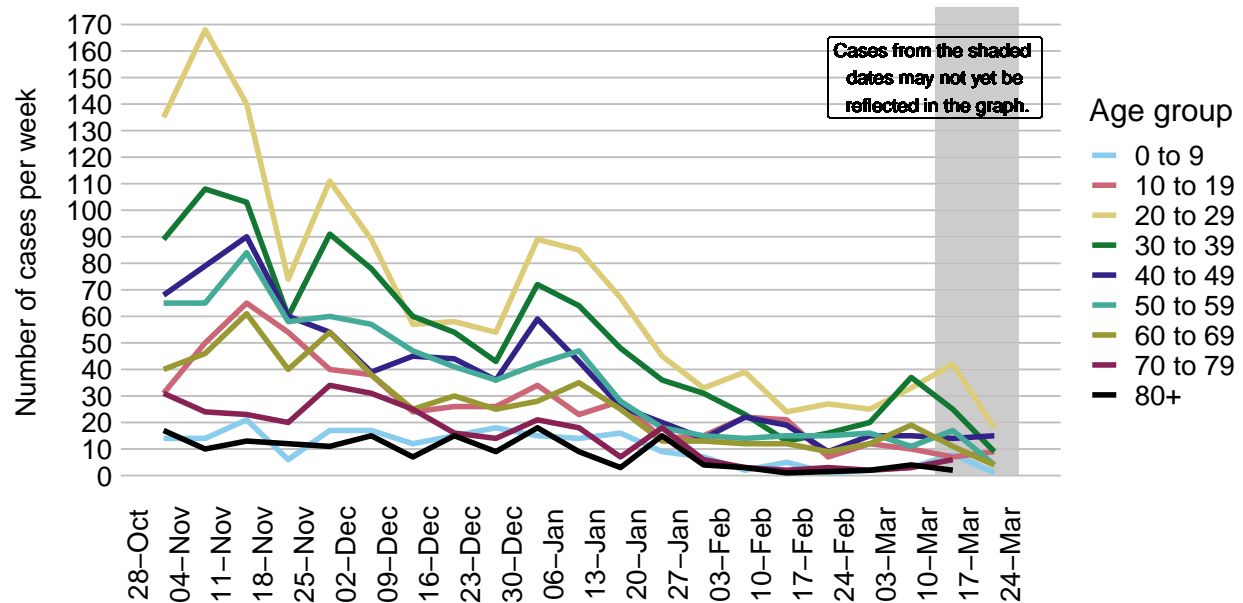
Data as of March 25, 2021

COVID-19 Cases by age group

Missoula County, since March 2020. N = 8606 cases.

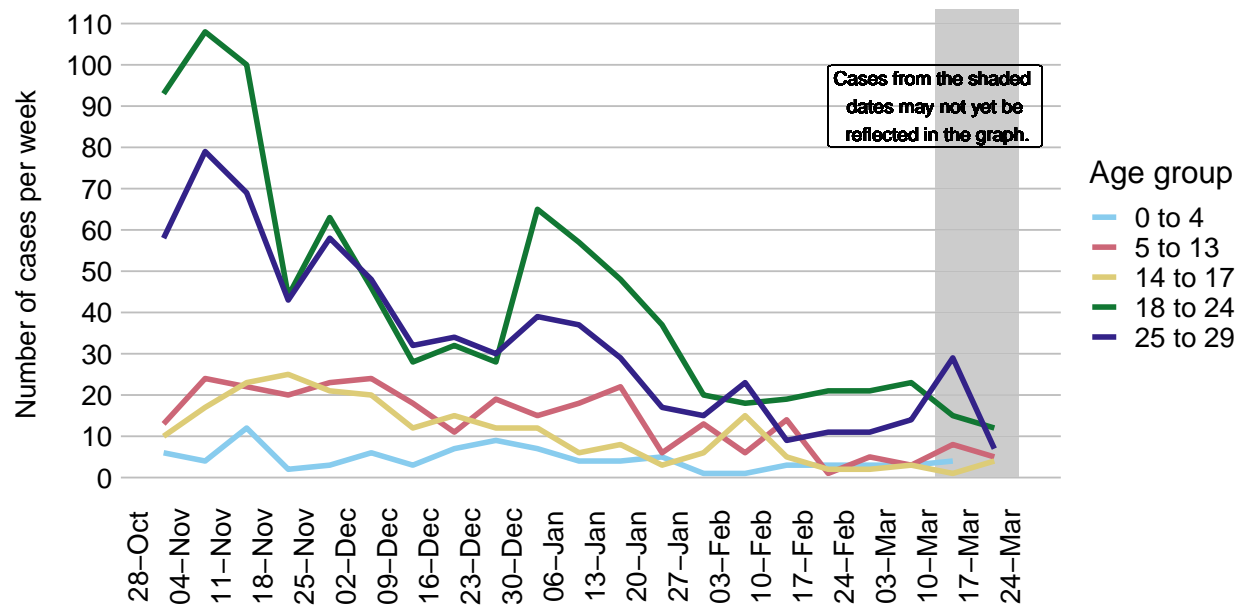


Weekly COVID-19 cases by age group
Missoula County, 2020. N = 5847 cases.

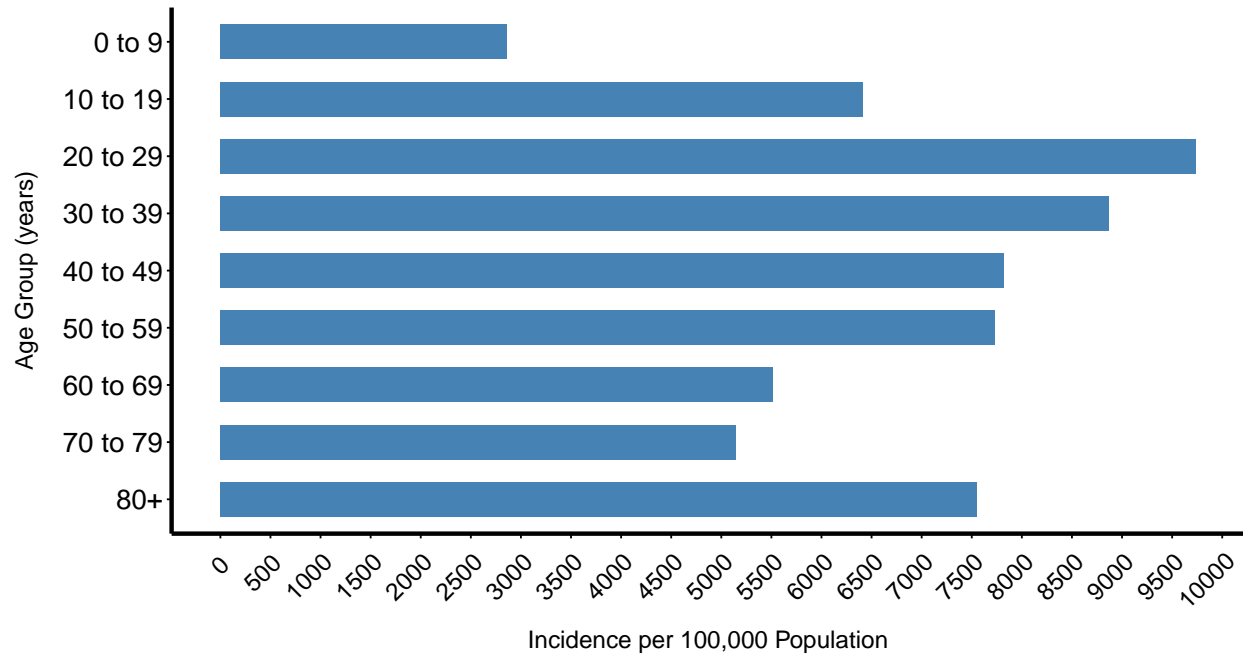


Weekly COVID-19 cases by age group

Missoula County, 2020. N = 2190 cases.

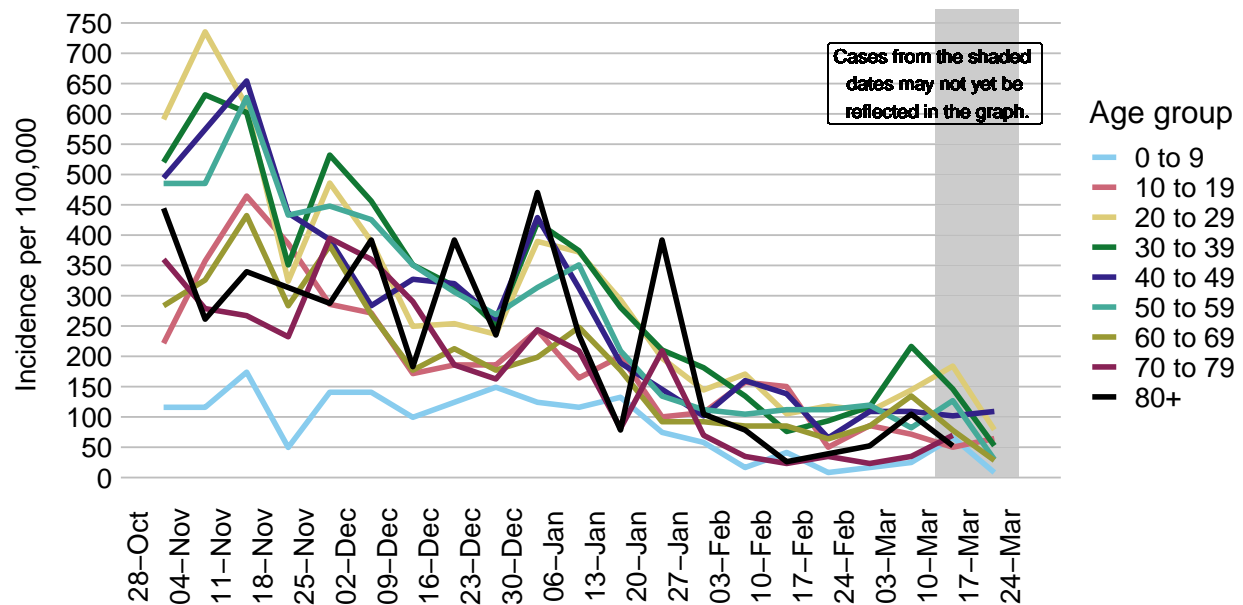


COVID–19 incidence by age group
Missoula County, since March 2020. N = 8606 cases.



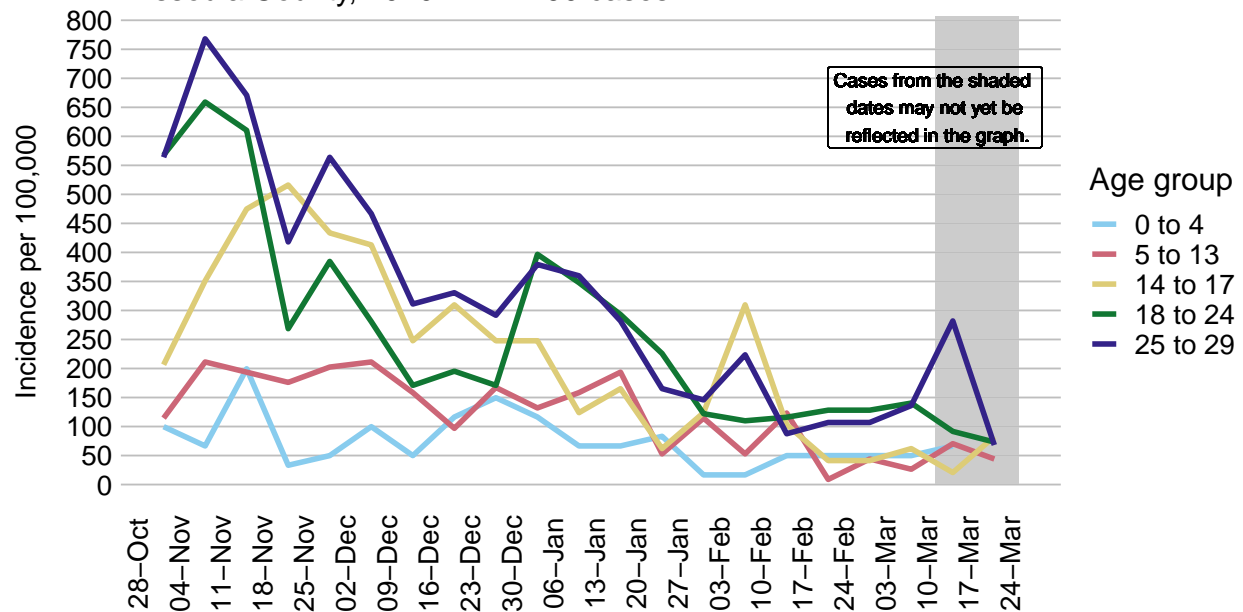
COVID-19 incidence per week by age group

Missoula County, 2020. N = 5847 cases.



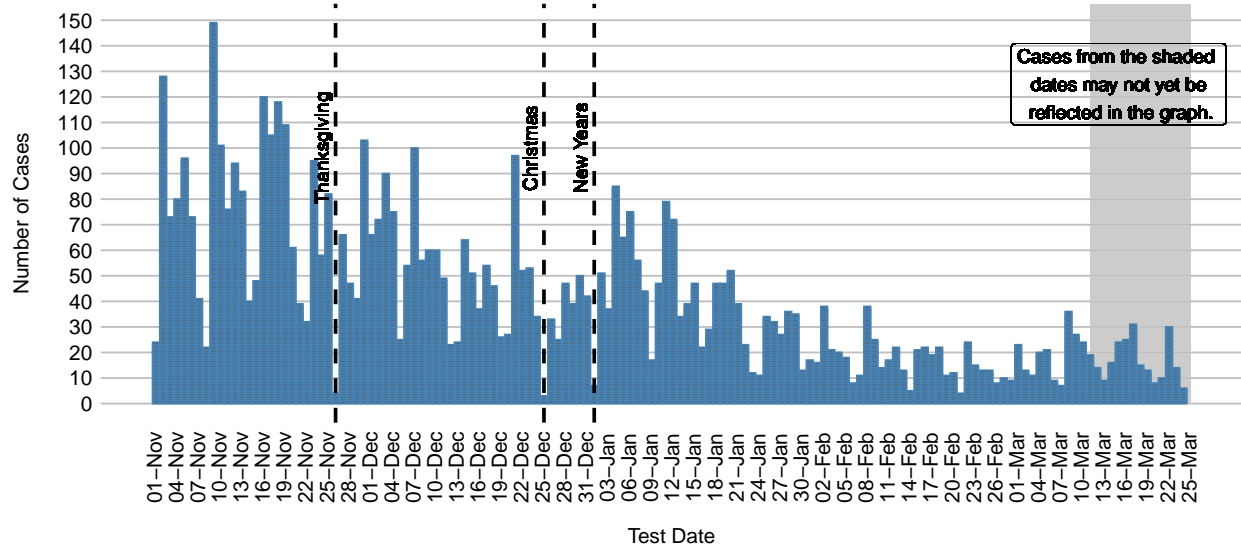
COVID-19 incidence per week by age group

Missoula County, 2020. N = 2190 cases.



COVID-19 Cases in Missoula County Since November 1, 2020

Cases in plot = 5867



COVID-19 Rolling 14-day R-number, Missoula County

