

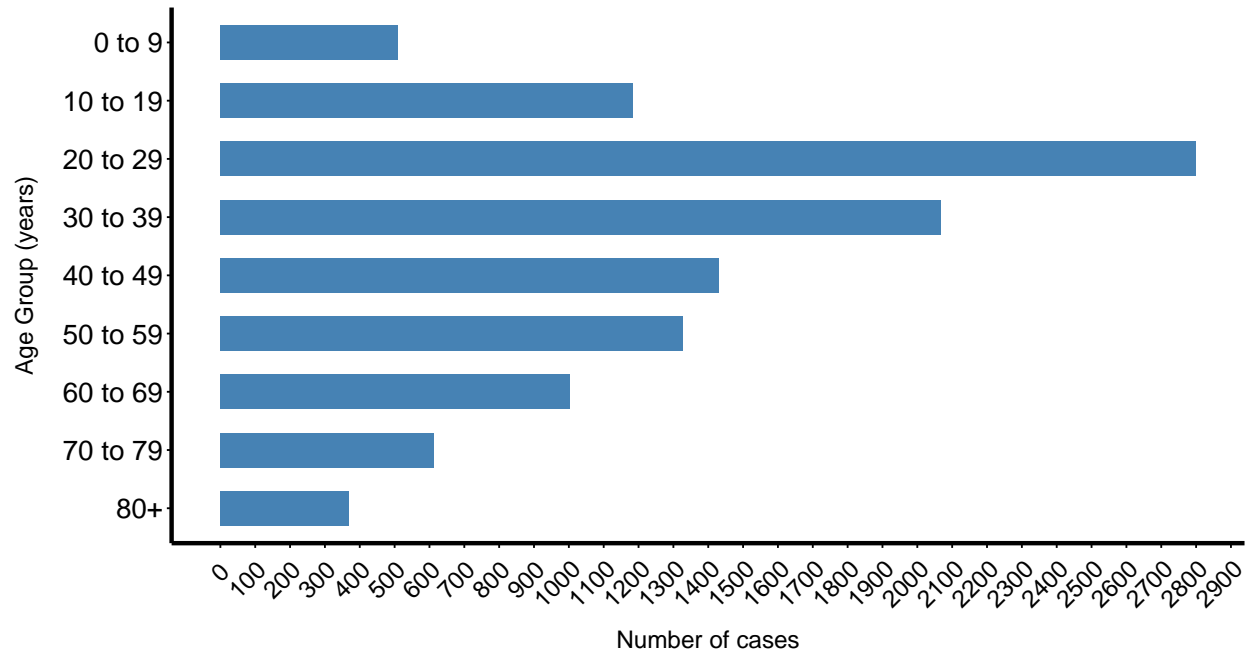
Missoula County COVID-19 Cases

Ethan Walker, University of Montana

Data as of September 7, 2021

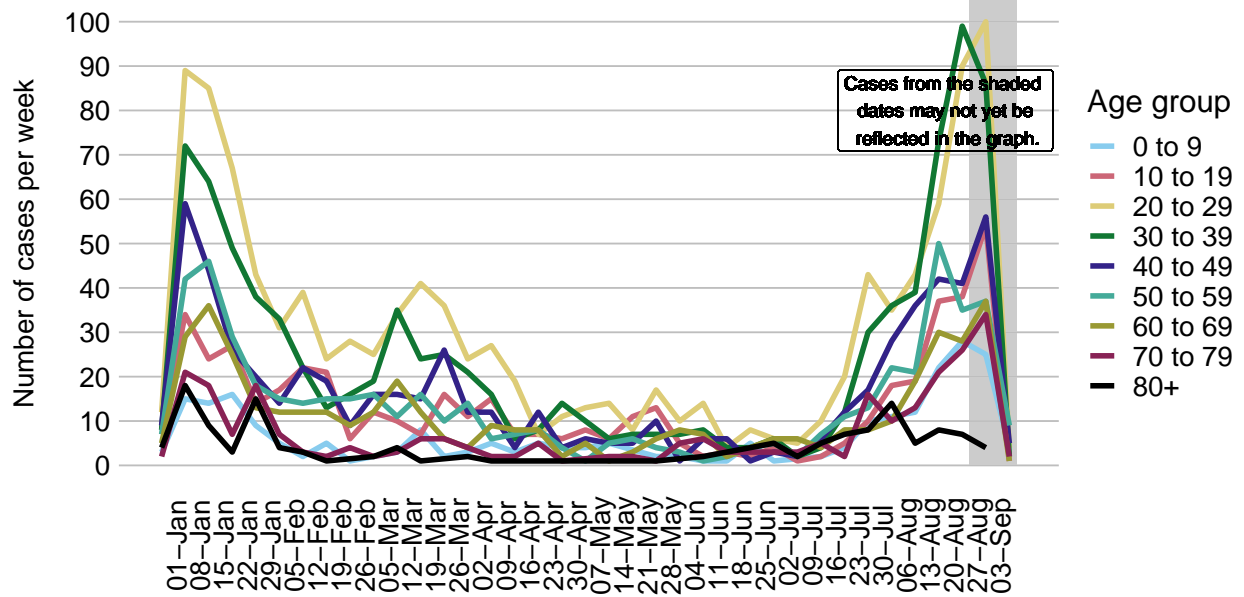
COVID–19 Cases by age group

Missoula County, since March 2020. N = 11304 cases.



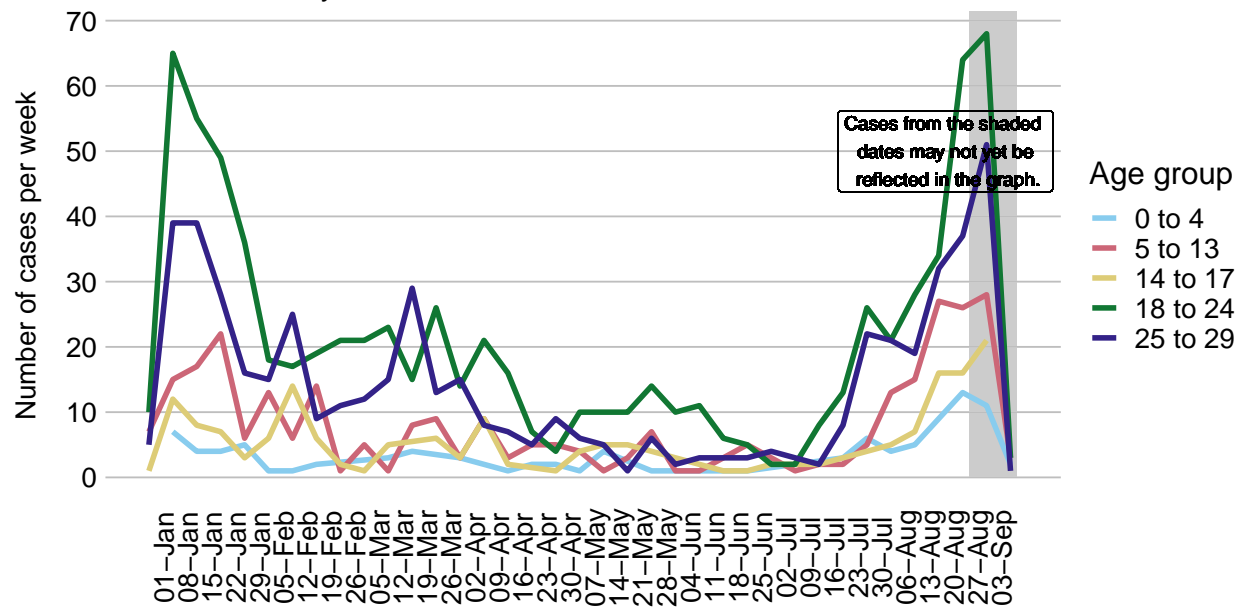
Weekly COVID-19 cases by age group

Missoula County, 2021. N = 4807 cases.

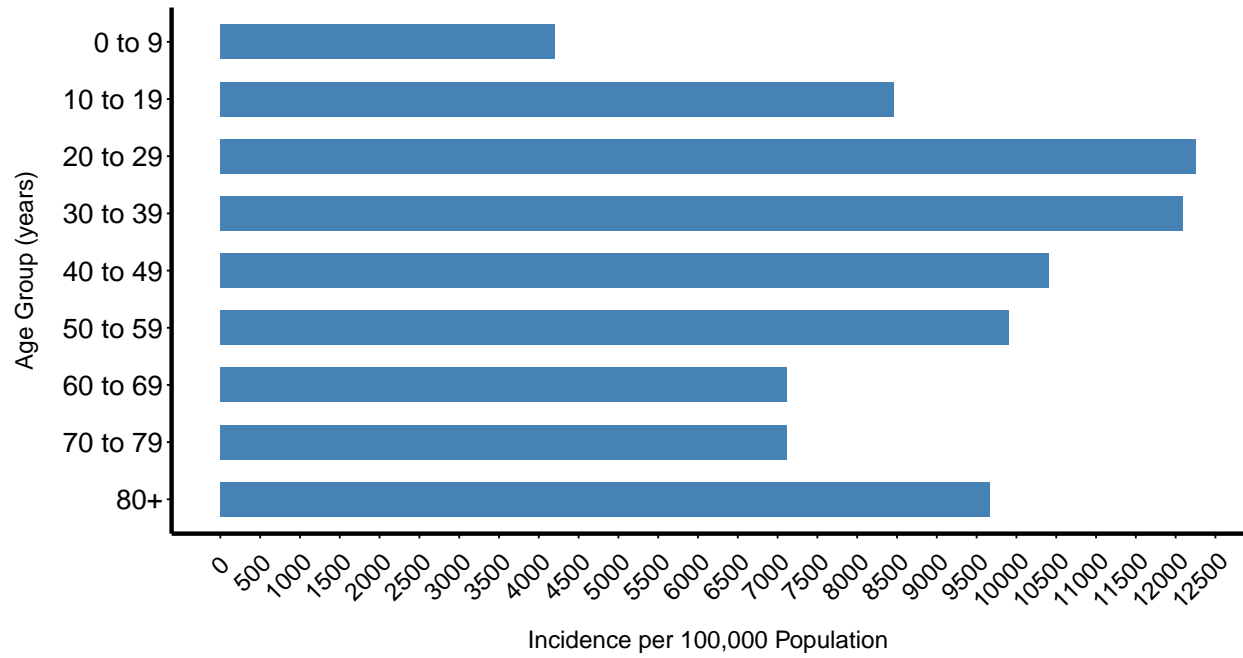


Weekly COVID-19 cases by age group

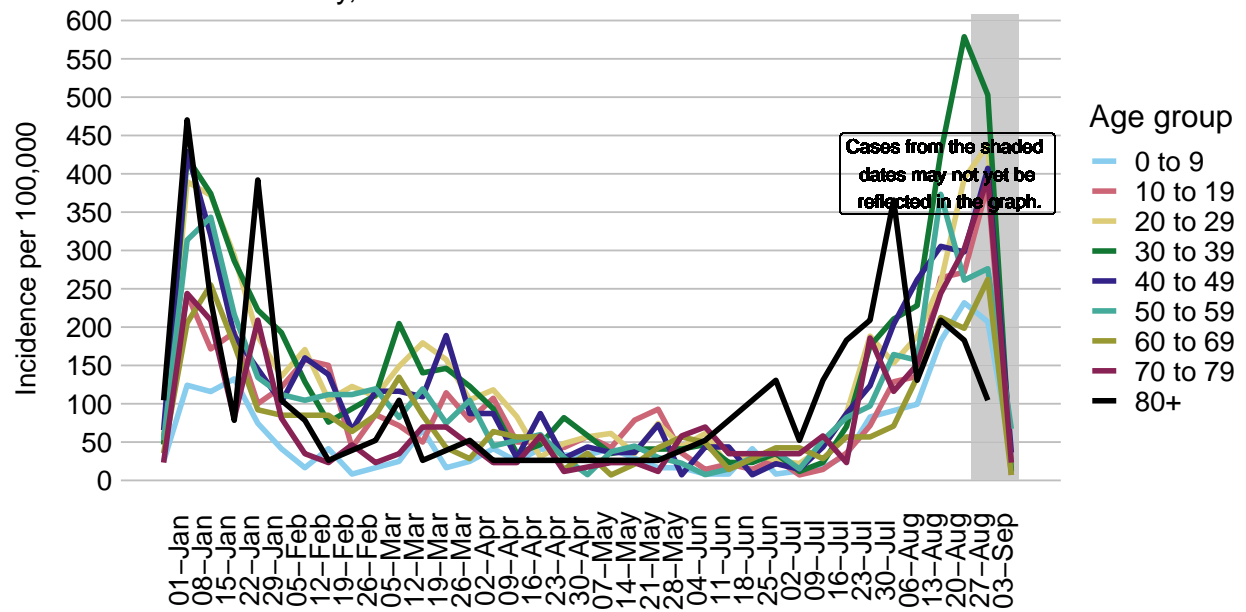
Missoula County, 2021. N = 1895 cases.



COVID–19 incidence by age group
Missoula County, since March 2020. N = 11304 cases.

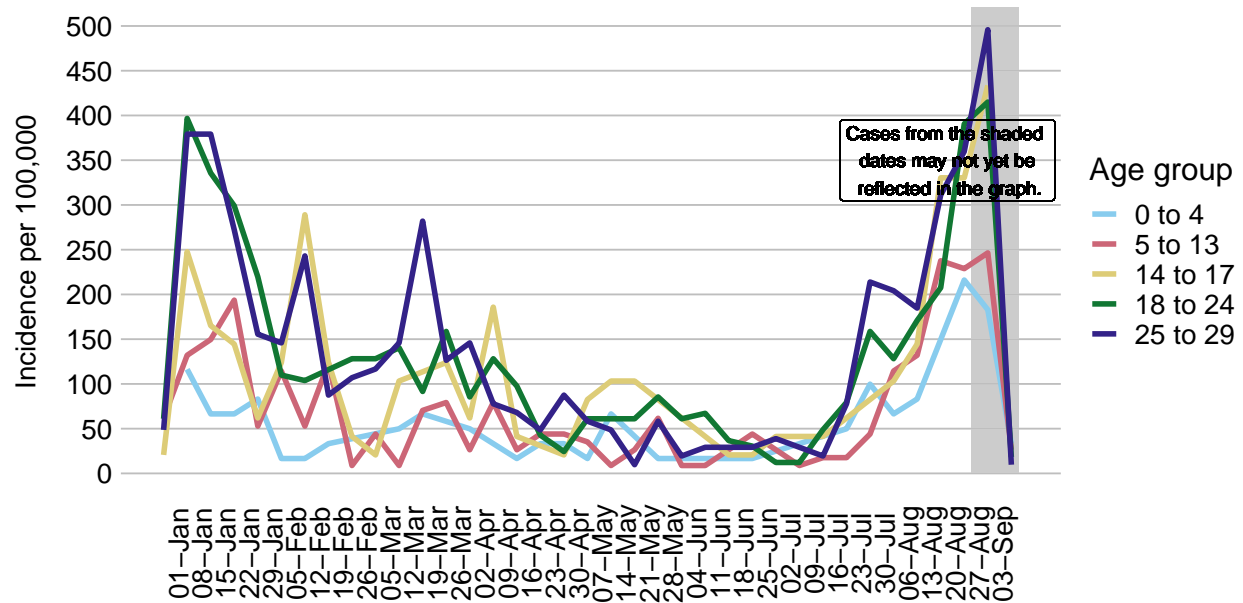


COVID-19 incidence per week by age group
Missoula County, 2021. N = 4807 cases.



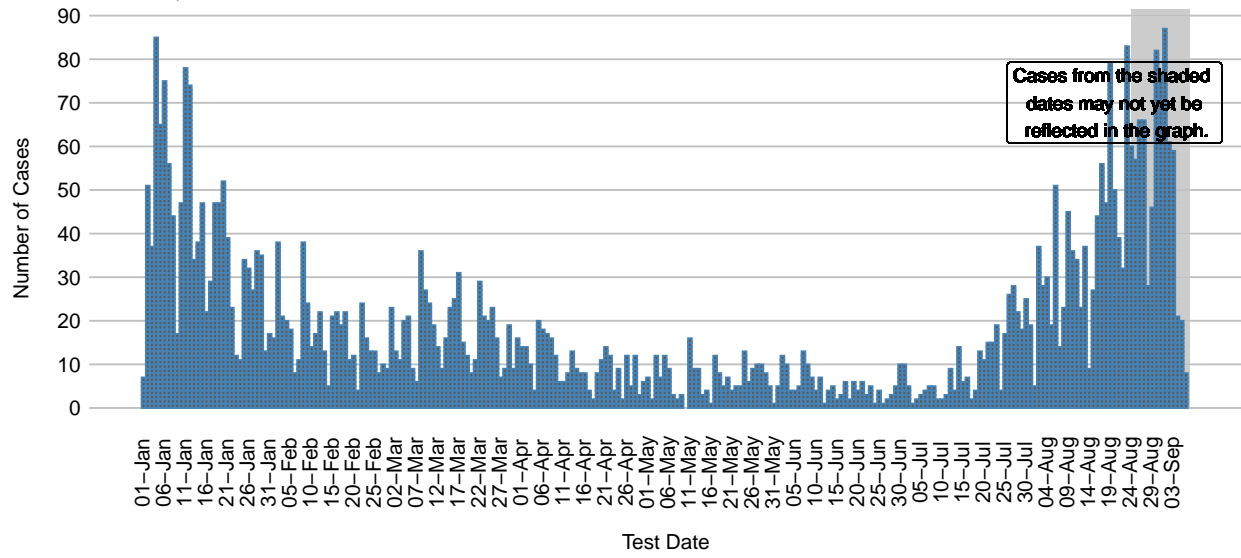
COVID-19 incidence per week by age group

Missoula County, 2021. N = 1895 cases.



COVID-19 Cases in Missoula County Since January 1, 2021

Cases in plot = 4796



COVID-19 Rolling 14-day R-number, Missoula County

